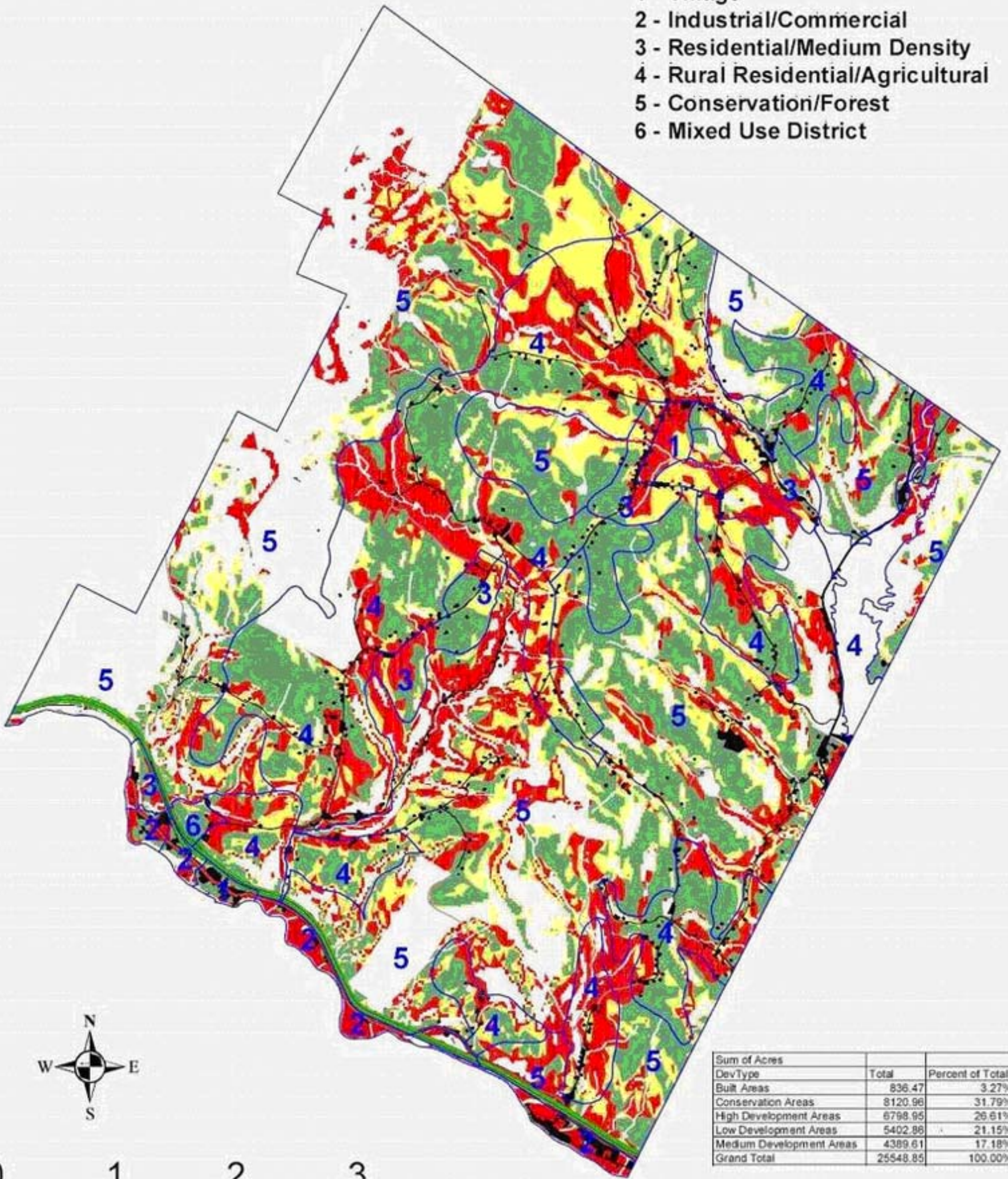


Middlesex Zoning, Development Potential, and Roads

Land Use Codes

- 1 - Village
- 2 - Industrial/Commercial
- 3 - Residential/Medium Density
- 4 - Rural Residential/Agricultural
- 5 - Conservation/Forest
- 6 - Mixed Use District



Sum of Acres	Total	Percent of Total
DevType		
Built Areas	836.47	3.27%
Conservation Areas	8120.96	31.79%
High Development Areas	6798.95	26.61%
Low Development Areas	5402.86	21.15%
Medium Development Areas	4389.61	17.18%
Grand Total	25548.85	100.00%



Middlesex Roads Class

- Class 1, 2, and 3
- Class 4
- Legal Trail
- Vermont State Highway
- US Highway
- Interstate

Zoning

Development Potential

- Built Area (-2745 to -2000)
- Conservation Area (-1999 to -200)
- Low Development Area (-199 to -75)
- Medium Development Area (-74 to -26)
- High Development Area (-25 to 25)

Map Created by CVRPC
 M:\DSS\Middlesex\Maps\Map4.mxd



Data is only as accurate as its original source.
 This map is for planning purposes only.
 This map may contain errors and omissions.