

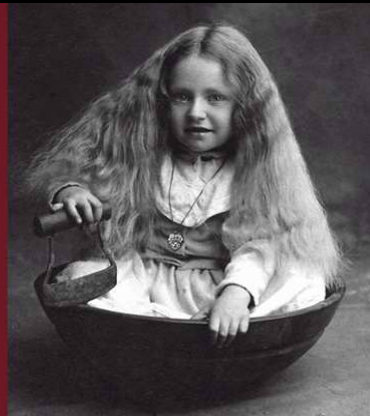
Middlesex Town Plan

2008

Middlesex
in the
Making

*History and
Memories of a
Small Vermont Town*

by
Sarah Seidman
and Patricia Wiley
of
The Middlesex Historical Society



Approved by Middlesex Select Board January 2008

Table of Contents

CHAPTER 1: INTRODUCTION	3
<hr/>	
PURPOSE OF THE TOWN PLAN	3
THE PLANNING PROCESS	3
RECENT SURVEY RESULTS	4
VISION FOR THE FUTURE	5
CHAPTER 2: COMMUNITY HISTORY	7
<hr/>	
GOALS, OBJECTIVES, & IMPLEMENTATION STRATEGIES	9
CHAPTER 3: COMMUNITY PROFILE	11
<hr/>	
POPULATION TRENDS	11
POPULATION PROJECTIONS	11
CURRENT CHARACTERISTICS	12
INCOME & EDUCATION	14
CHAPTER 4: ECONOMIC DEVELOPMENT	16
<hr/>	
OVERVIEW	16
EMPLOYMENT OPPORTUNITIES IN MIDDLESEX	17
GOALS, OBJECTIVES, AND IMPLEMENTATION STRATEGIES	19
CHAPTER 5: HOUSING	21
<hr/>	
HOUSEHOLD CHARACTERISTICS	21
HOUSING SUPPLY	22
HOUSING DEMAND	23
HOUSING AFFORDABILITY	24
GOALS, OBJECTIVES, AND IMPLEMENTATION STRATEGIES	25
CHAPTER 6: NATURAL RESOURCES	27
<hr/>	
FORESTS AND FIELDS	27
STREAMS, RIVERS, PONDS, WETLANDS, AND GROUNDWATER	27
PLANTS AND ANIMALS	28
GOALS, OBJECTIVES, & IMPLEMENTATION STRATEGIES	28
CHAPTER 7: ENERGY	30
<hr/>	

OVERVIEW	30
GOALS, OBJECTIVES, & IMPLEMENTATION STRATEGIES	31
CHAPTER 8: TRANSPORTATION	32
GOALS, OBJECTIVES, & IMPLEMENTATION STRATEGIES	33
CHAPTER 9: COMMUNITY FACILITIES & SERVICES	35
EDUCATION	35
EDUCATION GOALS, OBJECTIVES, AND IMPLEMENTATION STRATEGIES	36
EMERGENCY SERVICES	38
EMERGENCY SERVICE GOALS, OBJECTIVES, AND IMPLEMENTATION STRATEGIES	38
RECREATION	41
STATE LANDS	41
CLASS 4 ROADS AND LEGAL TRAILS	43
ANCIENT ROADS	44
FUTURE RECREATION USE	46
RECREATION GOALS, OBJECTIVES, AND IMPLEMENTATION STRATEGIES	47
WATER & SEWAGE	48
WATER & SEWAGE GOALS, OBJECTIVES, AND IMPLEMENTATION STRATEGIES	48
SOLID WASTE	49
SOLID WASTE GOALS, OBJECTIVES, AND IMPLEMENTATION STRATEGIES	50
CHAPTER 10: LAND USE	51
MIDDLESEX VILLAGE/EXIT 9: LAND USE AND DEVELOPMENT PLAN	52
CHAPTER 11: REGIONAL COORDINATION	54
ADJACENT TOWNS	54
REGIONAL COOPERATION	54
COMPATIBILITY STATEMENT	55
MAPS	56
APPENDIX I	62